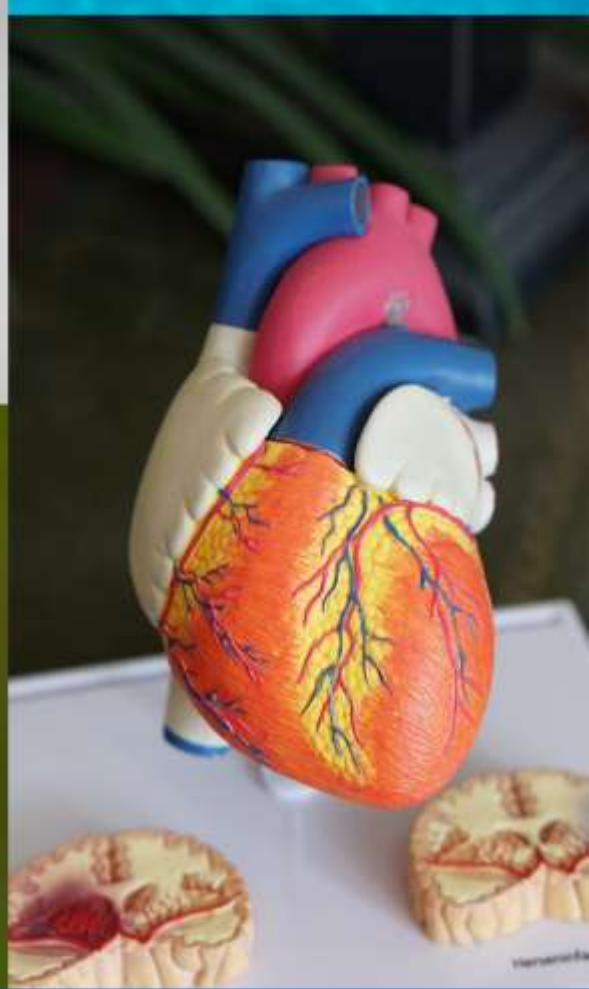




**RESEARCH JOURNAL OF  
BIOTECHNOLOGY**  
VOL. 16 (2), FEBRUARY 2021



**JOURNAL IS INDEXED IN SCOPUS,  
CHEMICAL ABSTRACTS, NAAS, UGC,  
WEB OF SCIENCE AND  
ESCI HAVING IMPACT FACTOR 0.233**

# RESEARCH JOURNAL OF BIOTECHNOLOGY

An International Peer Reviewed Research Journal of Biotechnology, Nanotechnology, Biological Sciences  
*Res. J. Biotech.*, Volume 16(2), Pages 1-240, February 2021, SCI Impact Factor 0.233

Editor- in- Chief (Hon.)  
**Dr. Shankar Lal Garg**  
 Indore, INDIA

Correspondence Address:  
**"Research Journal of Biotechnology"**  
 Sector AG/80, Scheme No. 54, Indore 452 010 (M.P.) INDIA  
 Mobile: +91-94250-56228

Web Site: <https://www.worldresearchersassociations.com>

E-mail: [info@worldresearchersassociations.com](mailto:info@worldresearchersassociations.com)

## CONTENTS

<b>Research Papers:</b>		
1.	<b>The role of Serum Interleukine-6 level in type 2 diabetic nephropathy</b> - Pham Tran Thu Ha, Nguyen Gia Binh, Cuc Thi Thu Nguyen and Phung Thanh Huong	1-4
2.	<b>Isolation and identification of endophytic fungi from <i>Tinospora cordifolia</i></b> - Priti and Rani Sulekha	5-15
3.	<b>Correlation and transcriptomic analysis revealing potential microRNA-gene interactions associated with breast cancer formation</b> - Agustriawan David, Parikesit Arli Aditya, Nurdiansyah Rizky, Ivan Jeremias and Ramanto Kevin Nathanael	16-23
4.	<b><i>In-silico</i> mining and characterisation of TIFY genes in mango</b> - Israr Ahmad, Muthukumar M. and Rajan S.	24-28
5.	<b>HPTLC Method Development and Validation for Identification and Quantification of Lupeol from Bark and Leaves of <i>Careya arborea</i> Roxb.</b> - Gupta Priyanka, Patil Darshana and Patil Avinash	29-33
6.	<b>Mechanisms of Indigosol Blue O4B batik dye wastewater degradation by <i>Aspergillus</i> sp. 3 and its product analysis</b> - Ratna Stia Dewi, Rina Sri Kasiamdari, Erni Martani and Yekti Asih Purwestri	34-42
7.	<b>Optimization of reaction parameters for the degumming of buei (<i>Grewia Optiva</i>) bast fibres using alkaline pectinase with the RSM</b> - Thakur Pitambri, Singh Abhishek Kumar and Mukherjee Gunjan	43-49
8.	<b>Antibacterial Activity of Lactic Acid Bacteria isolated from Dairy Products against Enteropathogens</b> - Bhosale H.J. and Javeriya Tajannum	50-54
9.	<b>Application of Response Surface Methodology for optimizing processing conditions for the adsorption of pollutants from refinery effluent of Oman</b> - Sakhile Karunya, Sarkar Jyoti Prakas, Guptha Prathapatim and Feroz Shaik	55-65
10.	<b>Regulation of IL-2 and IL-4 cytokines by fractionated <i>Lawsonia inermis</i> Linn. leaves extract</b> - Goel Anjana, Sharma Ritesh and Pathak Juhi	66-72
11.	<b>Molecular analysis of thermomemory-related genes and high-temperature tolerance in wheat genotypes</b> - Komolafe Omotayo, Krishna G. Kumar, Kumar Sudhir, Kumar R. Ranjeet, Padaria C. Jasdeep, Chinnusamy Viswanathan and Arora Ajay	73-86
12.	<b>Chitosan improving Growth in Chili (<i>Capsicum annum</i> L.) Plants and acting through Distinct Gene Regulation between Cultivars</b> - Dwivany Fenny M., Meitha Karlia, Kuswati, Esyanti Rizkita R. and Nugrahapraja Husna	87-92

13.	<b>Production of therapeutically important coumarin-scopoletin from suspension cultures of <i>Abutilon indicum</i></b> - Medagani Sairam, Chilukuri Urmila, Rao Kiranmayee, Chodiseti Bhuvaneswari, Ranjit Pabbati and Giri Archana	93-98
14.	<b>Enhancing the sapota [<i>Manilkara achras</i> (Mill) Forsberg] yield through intervention of <i>Arbuscular mycorrhizal</i> fungi and its associated bacteria</b> - Saritha B., Panneerselvam P., Srinivas K., Mitra Debasis and Senapati Ansuman	99-109
15.	<b>Assessment of enzymatic antioxidant and antimicrobial potential of <i>Reinwardtia indica</i> from Garhwal region of Uttarakhand</b> - Saklani Pooja, Rana Pawan Singh, Chandel Chandresh, Mehta Sonam and Thakur Rahul	110-115
16.	<b><i>In-silico</i> insights to identify the bioactive compounds of edible mushrooms as potential MMP9 inhibitor for Hepatitis-B</b> - Mishra Divya, Chaturvedi Aparna, Rashmi Mayank and Singh M.P.	116-126
17.	<b>Partial purification and characterization of esterase from the seeds of <i>Leucaena leucocephala</i></b> - Mandal Tanusree and Siddalinga Murthy K.R.	127-132
18.	<b>Cloning of gellan gum biosynthetic genes <i>gelC</i>, <i>gelD</i> and <i>gelE</i> for enhanced production of gellan gum by <i>Sphingomonas paucimobilis</i> ATCC 31461</b> - Sukumar Soumiya, Arockiasamy Santhiagu and Chemmattu Moothona Manjusha	133-140
19.	<b>Character associations, path analysis and molecular characterization in Cowpea (<i>Vigna unguiculata</i> L.)</b> - Saxena Akansha, Padhiyar S.M., Kheni J. and Tomar Rukam S.	141-148
20.	<b>Assessment of Genetic diversity by using RAPD markers of three <i>Curcuma</i> species from Melghat forests of Amravati, (MS), India</b> - Dagawal Mangesh and Bhogaonkar Prabha	149-155
21.	<b>Potential probiotic <i>Lactobacillus casei</i> KLSA22 producing Lactase for Lactose Intolerant with an antibiotic susceptibility pattern</b> - Sarfaraz Ahmed, Prabhurajeshwar and Lingappa Kattimani	156-162
22.	<b>Process optimization of chickpea (<i>Cicer Arietinum</i> L.) seed protein isolates for functional foods</b> - Ramani Anusha, Singh Deepti, Puranik Vinita, Kumar Rajendra and Yadav Neelam	163-172
23.	<b>Micropropagation of critically endangered herb of Himalyan region: <i>Trillium govaniatum</i> for in vitro shoot proliferation and production of diosgenin</b> - Gupta Rolika, Sharma Deepak and Sood Hemant	173-178
24.	<b>Genome-wide Identification and Characterization of the Pectin Methylesterase (PME) and Pectin Methylesterase Inhibitor (PMEI) Gene Family in the Banana A-genome (<i>Musa acuminata</i>) and B-genome (<i>Musa balbisiana</i>)</b> - Nugrahapraja Husna, Abdullah Ervina Putri and Dwivany Fenny Martha	179-191
25.	<b>Mathematical Modelling to study locally the Seasonal Variability of Plankton Dynamics and Forage Fish in shallow Lagoon using Nutrient Phytoplankton Zooplankton and Forage Fish Model: Chilika - a case study</b> - Panda Bhanumati, Dube Anumeha and Kumar Sushil	192-205
<b>Review Papers:</b>		
26.	<b>Application of <i>in silico</i> Approach in Prediction of Epitopes</b> - Mishra Sonu and Gomase Virendra S.	206-214
27.	<b>A Decade Review: Preterm Labor and Homocysteine</b> - Panikar Surya, Sharma Sunil and Thakur Mansee	215-220

28.	<b>Cancer Diagnostics and Therapeutics: Recent Advances in Nanomedicine</b> - Neethu H., Supriya R. and Ananthakrishnan J.N.	221-230
29.	<b>Epigenomics: the interplay of genetic and epigenetic factors behind Psychological disorders</b> - Mondal Bidisha and Mitra Gouranga	231-236
30.	<b>Risk factors and preventive measures for basal cells carcinoma in India</b> - Sharma Paras, Chaubey Kundan Kumar, Bharti Pawan K. (late), Baruah Partho Protem, Yadav Premnidhi	237-240

❖ EDITORIAL BOARD: P V ❖